

# Mixly Installation Instructions



CONTENTS

01

Arduino IDE Installation

02

Mixly Installation

03

Frequently Asked Questions

# Install Arduino IDE 1.6.7

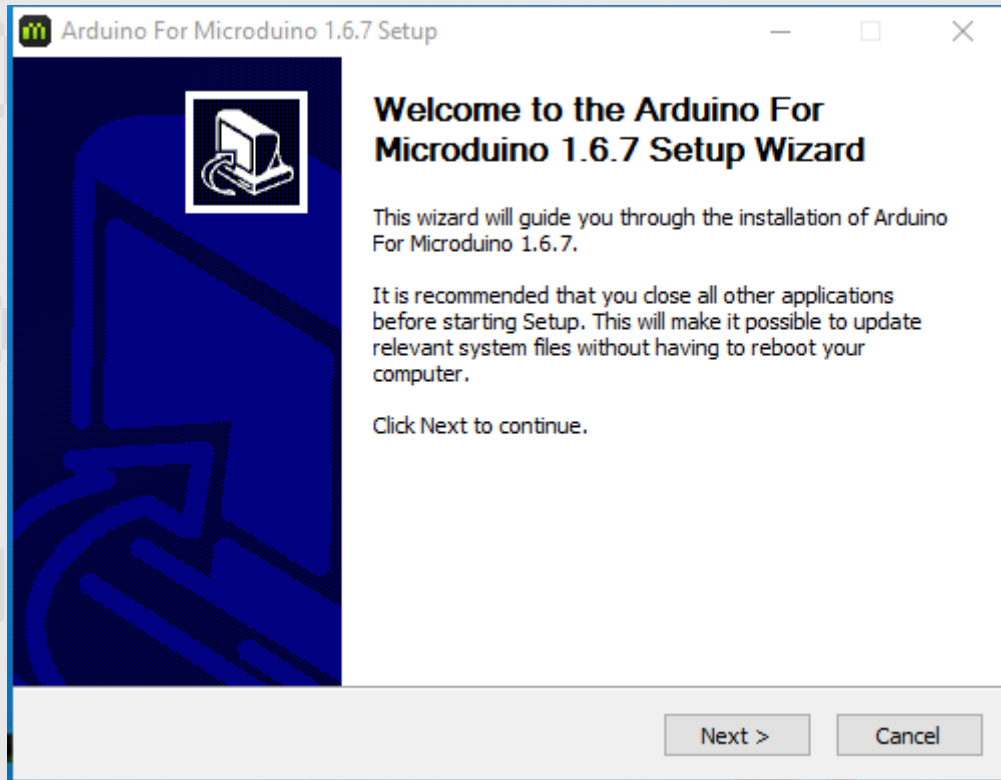
## STEP 01

Find the file **Arduino IDE 1.6.7 for Microduino.exe**.  
Double click it.



Arduino IDE  
1.6.7 for  
Microduino.exe

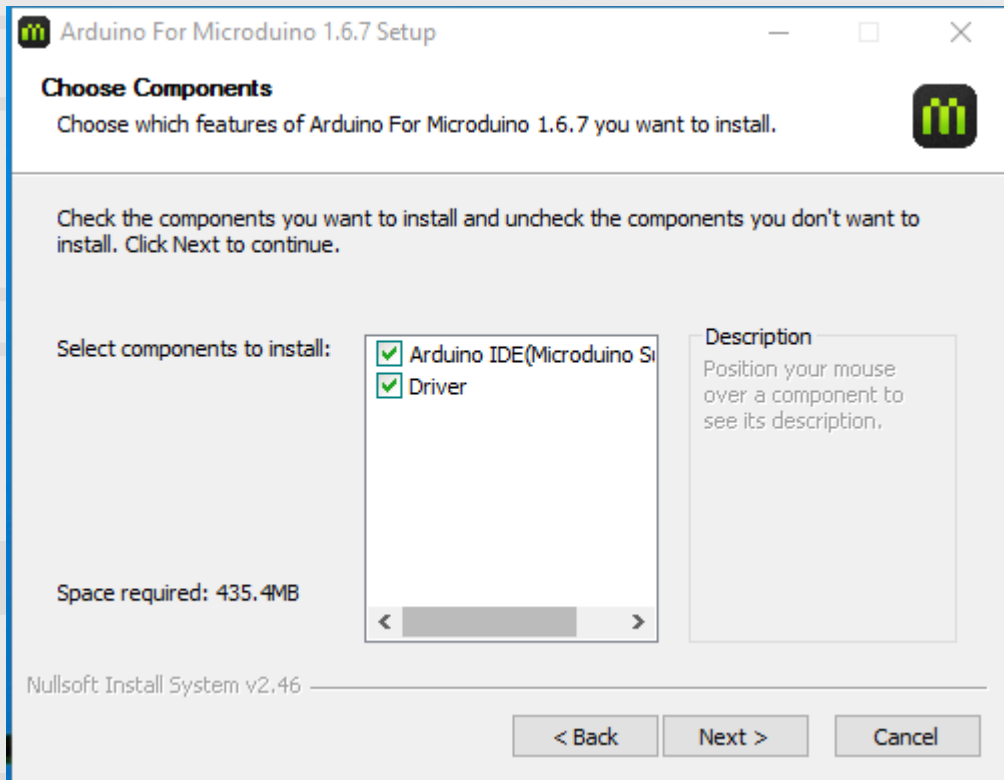
# Install Arduino IDE 1.6.7



STEP 02

Click **Next >**

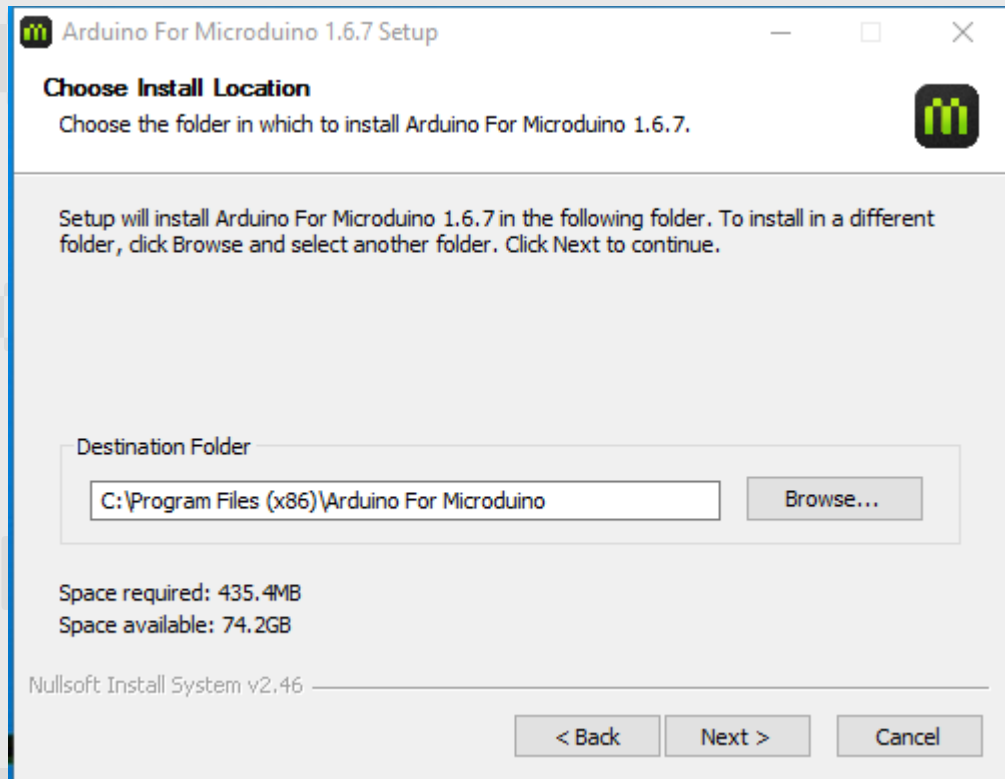
# Install Arduino IDE 1.6.7



STEP 03

Click **Next >**

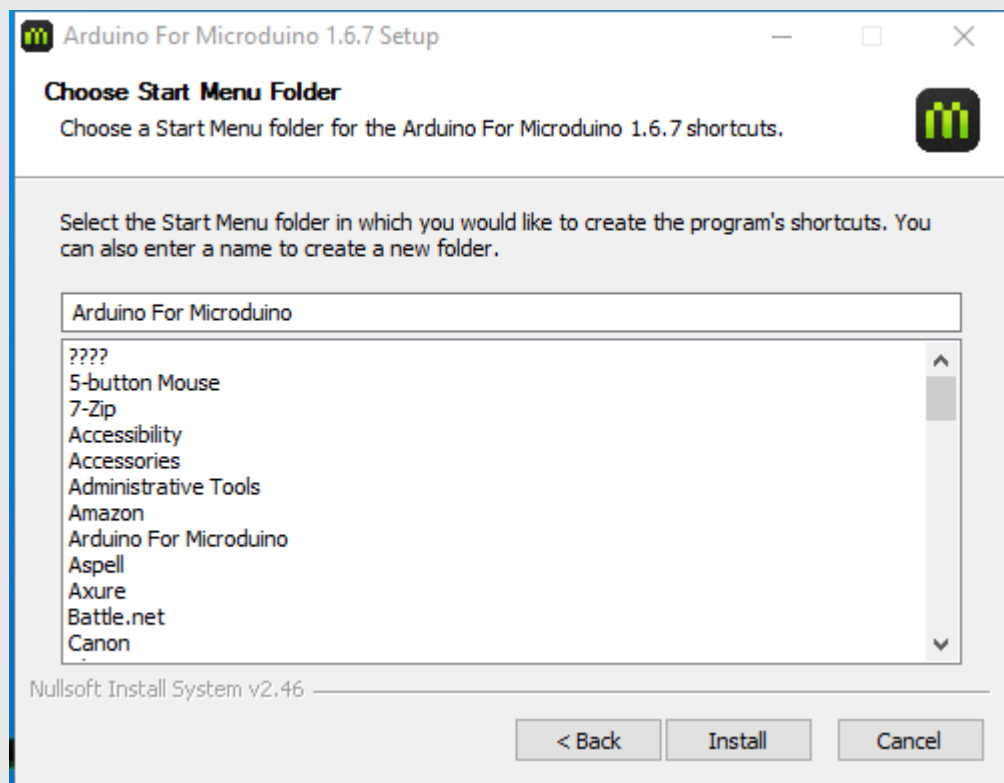
# Install Arduino IDE 1.6.7



## STEP 04

Select where you want to install.  
Click **Next >**

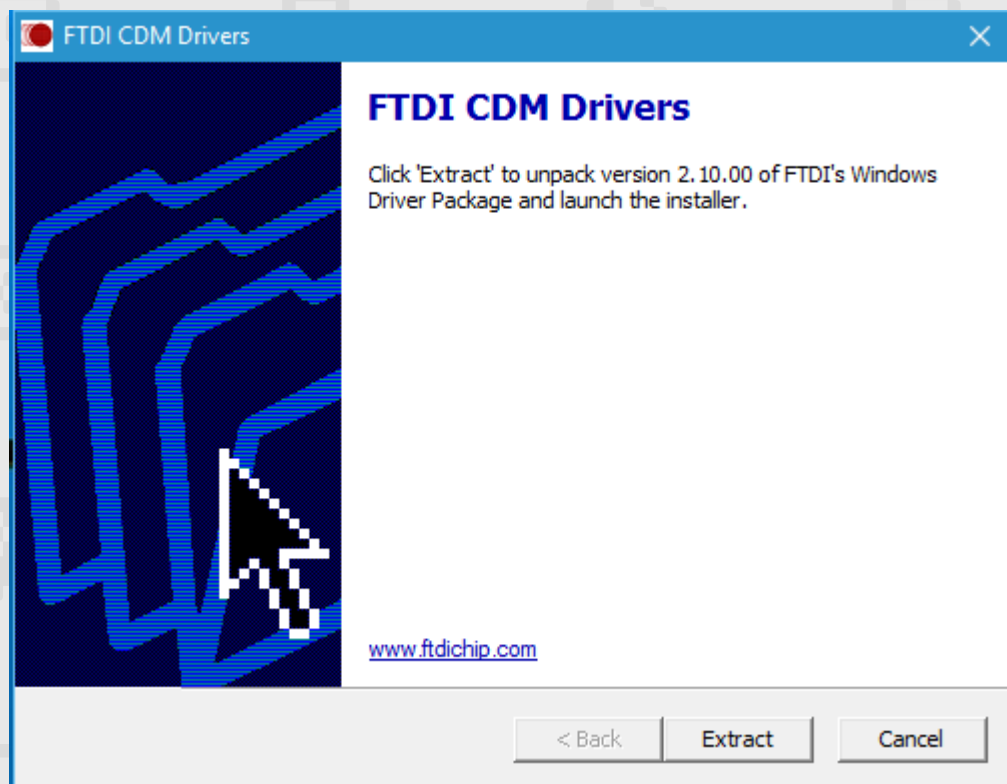
# Install Arduino IDE 1.6.7



STEP 05

Click **Install**

# Install Arduino IDE 1.6.7

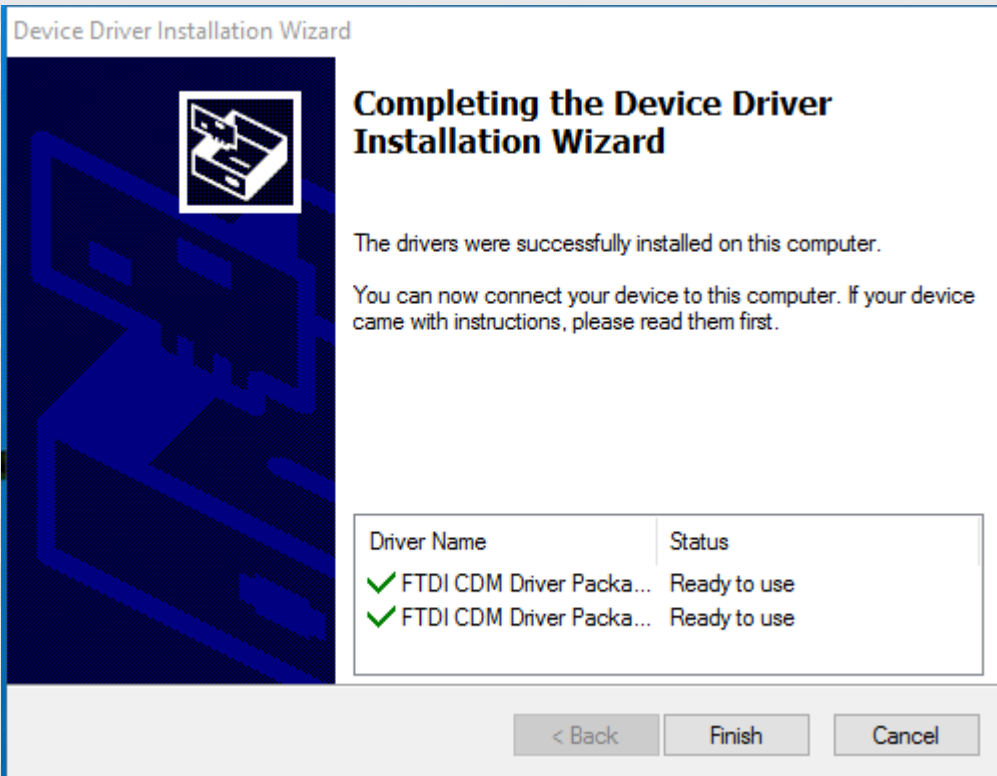


STEP 06

Click **Extract**



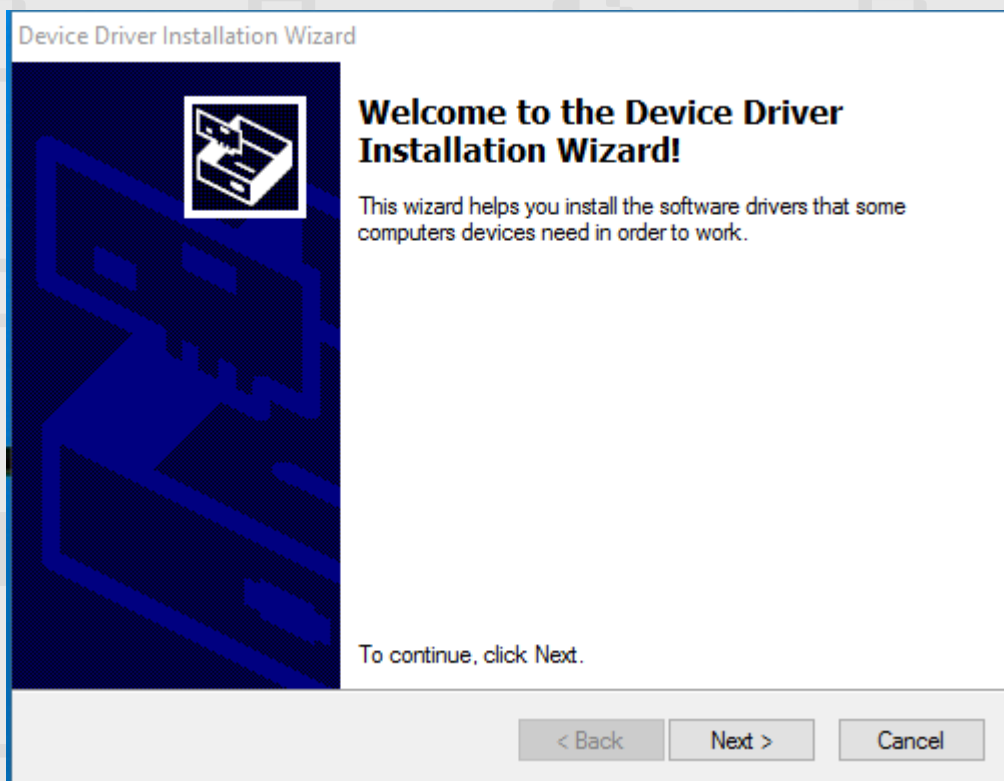
# Install Arduino IDE 1.6.7



STEP 07

Click **Finish**

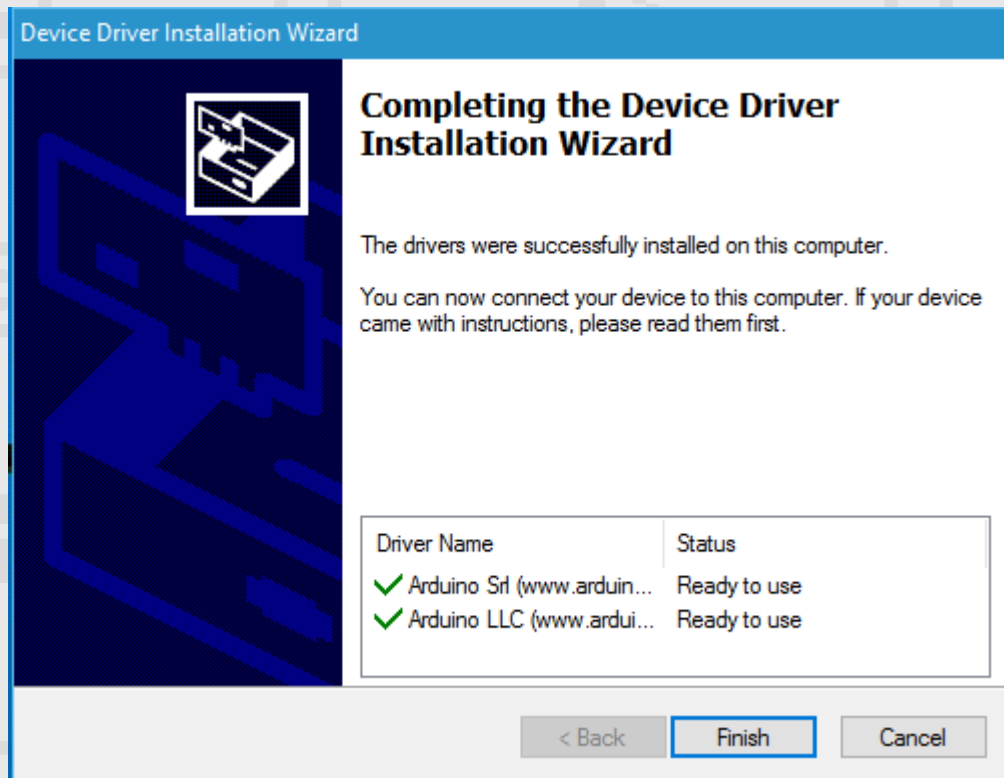
# Install Arduino IDE 1.6.7



STEP 08

Click **Next >**

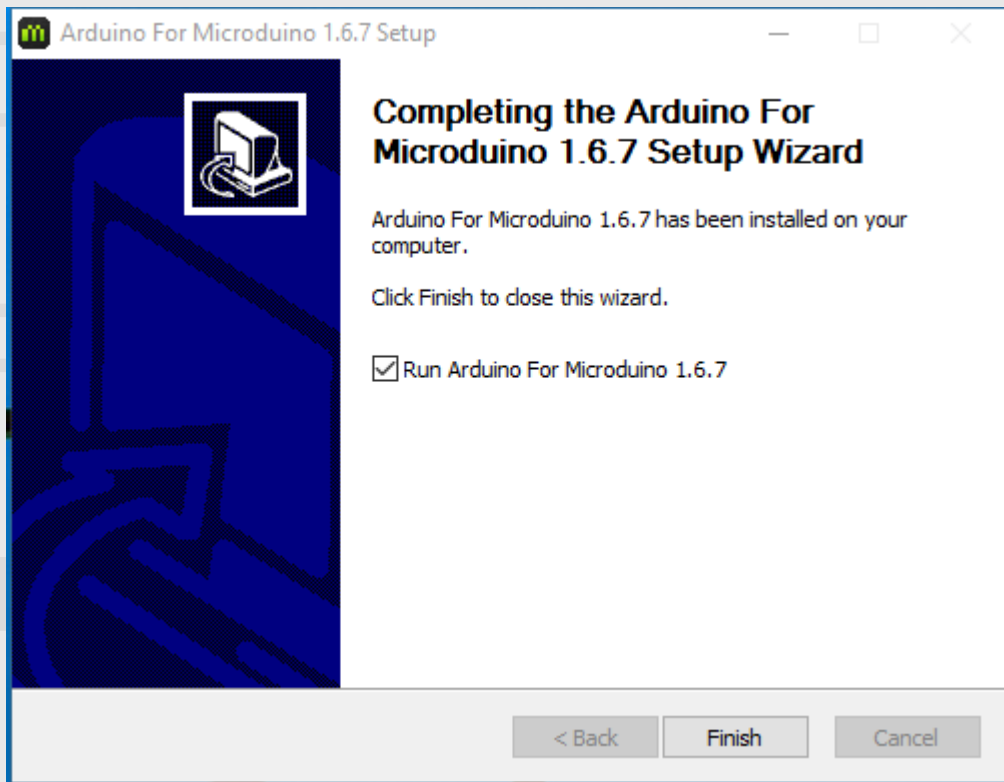
# Install Arduino IDE 1.6.7



STEP 09

Click **Finish**

# Install Arduino IDE 1.6.7



## STEP 10

Click **Finish** to complete the installation

CONTENTS

01

Arduino IDE Installation

02

Mixly Installation

03

Frequently Asked Questions

# Install Microduino Mixly

## STEP 01

Find the file **microduinoMixly.rar** and extract its contents.



microduinoMixl  
y.rar

## STEP 02

Find this file after extracting.



microduinoMixl  
y

# Install Microduino Mixly

## STEP 03

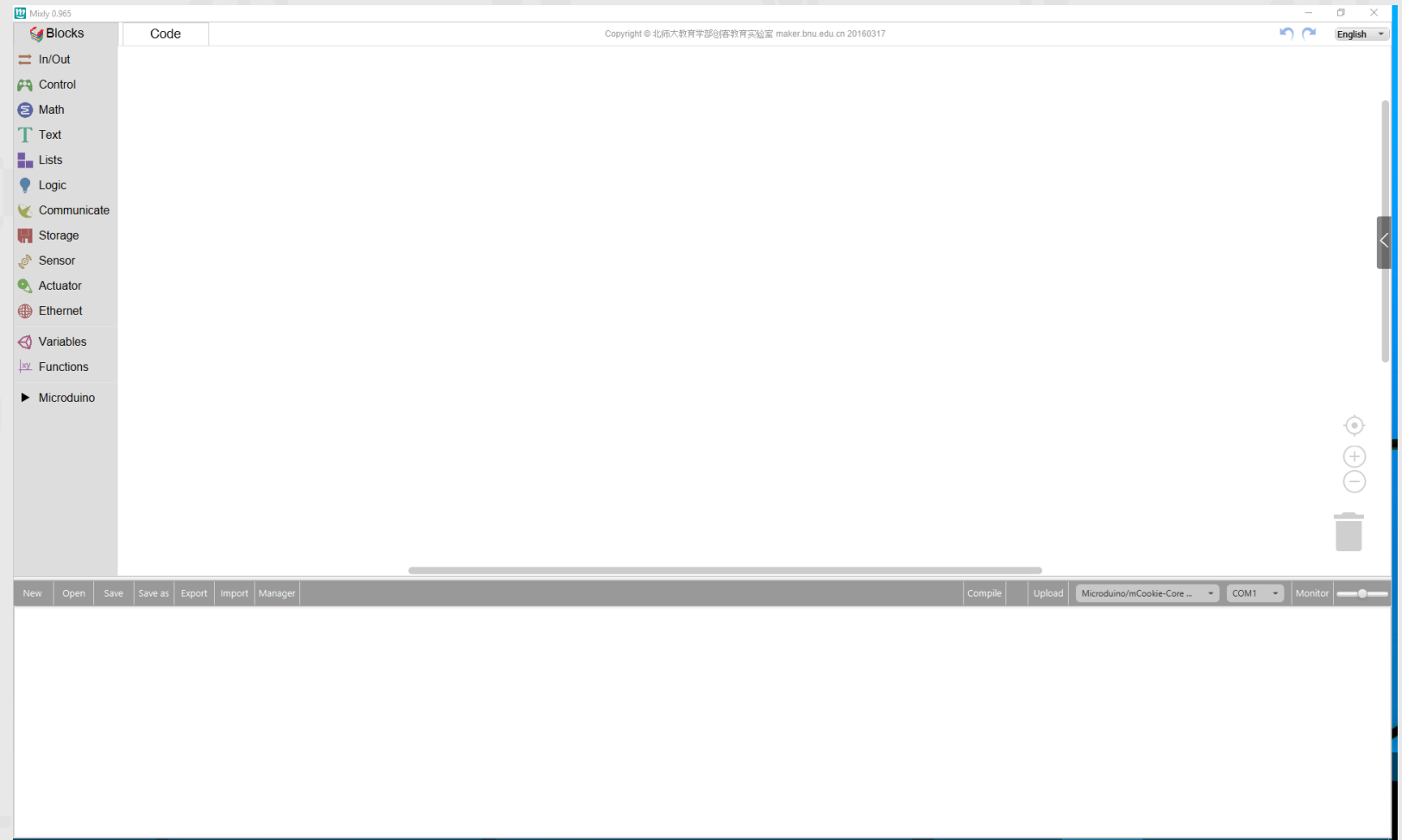
Double click **"Mixly"** to start Mixly

| Name           | Date modified     | Type                 | Size     |
|----------------|-------------------|----------------------|----------|
| .git           | 3/22/2016 9:01 PM | File folder          |          |
| blockly        | 3/22/2016 9:01 PM | File folder          |          |
| company        | 3/22/2016 9:01 PM | File folder          |          |
| Microduino-IDE | 3/22/2016 9:01 PM | File folder          |          |
| Mixly          | 3/22/2016 9:01 PM | File folder          |          |
| sample         | 3/22/2016 9:01 PM | File folder          |          |
| setting        | 3/22/2016 9:01 PM | File folder          |          |
| testArduino    | 3/22/2016 9:01 PM | File folder          |          |
| Mixly.jar      | 3/23/2016 9:41 AM | JAR File             | 4,605 KB |
| Mixly          | 3/23/2016 9:41 AM | VBScript Script File | 1 KB     |
| README.md      | 3/23/2016 9:41 AM | MD File              | 1 KB     |

# Install Microduino Mixly

## STEP 04

You should now see  
the Mixly interface!





CONTENTS

01

Arduino IDE Installation

02

Mixly Installation

03

Frequently Asked Questions

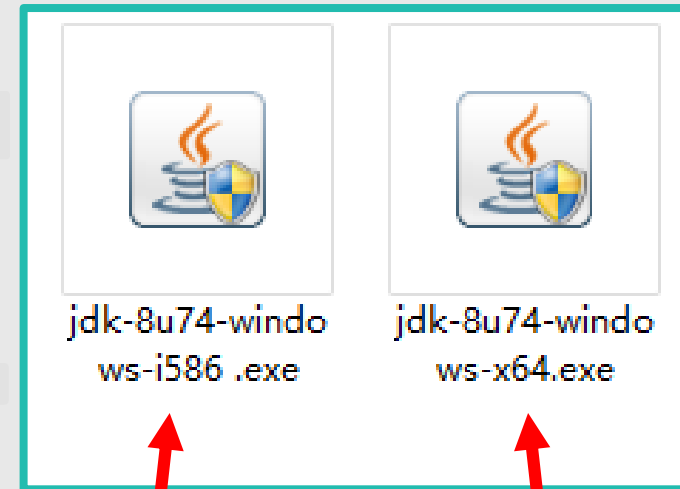
# Frequently Asked Questions

## Question #1

Double-clicking **"Mixly"** doesn't do anything

## Answer #1

Your computer doesn't have the Java environment installed. Install the JDK for your OS version.



32-Bit OS

64-Bit OS

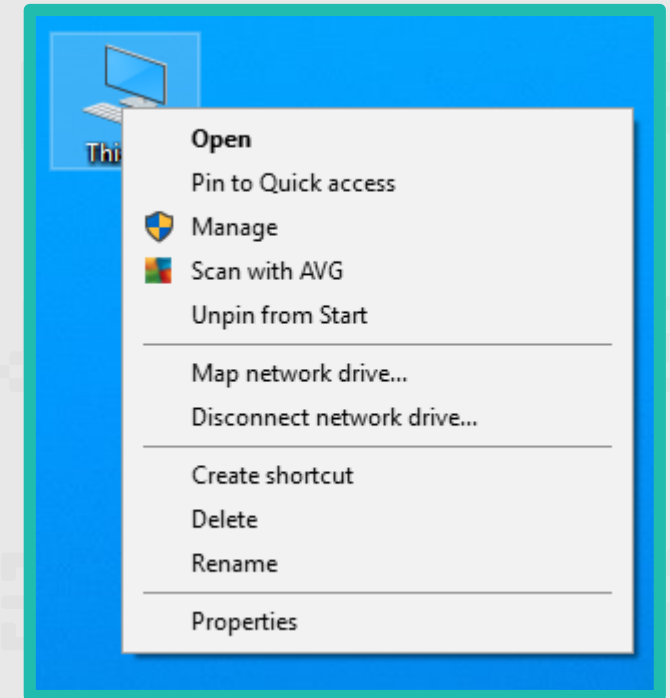
# Frequently Asked Questions

## Question 02

How do I know if my computer is 32 or 64 bit?

## Answer 02

Right click **My Computer**, click **Properties**



| System                  |   |
|-------------------------|---|
| Processor:              | Intel(R) Core(TM) i5-4690K CPU @ 3.50GHz 3.50 GHz   |
| Installed memory (RAM): | 16.0 GB (15.9 GB usable)                            |
| System type:            | 64-bit Operating System, x64-based processor        |
| Pen and Touch:          | No Pen or Touch Input is available for this Display |

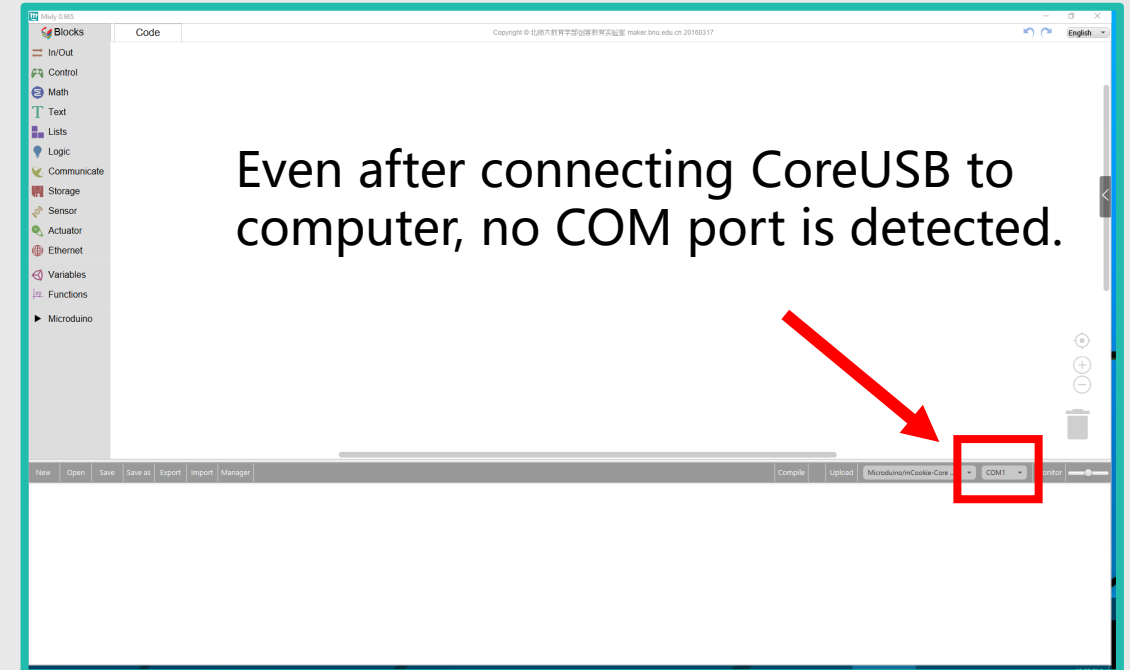
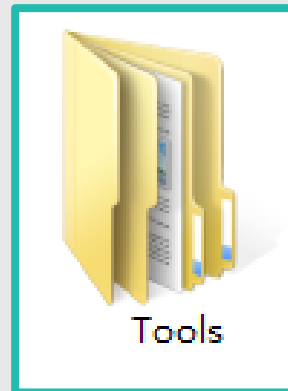
# Frequently Asked Questions

## Question 03

Mixly is unable to detect any **COM** ports after I installed it on **Windows 7**

## Answer 03




Open up the **Tools** folder



## Frequently Asked Questions

### Answer 03

Install the following: **FixDriverTool** and **Microsoft\_NET\_4.0**

|  |                 |                  |           |
|--|-----------------|------------------|-----------|
|  FixDriverTool驱动修复工具      | 2016/2/29 12:53 | 文件夹              |           |
|  FixDriverTool驱动修复工具.zip | 2015/6/13 20:23 | WinRAR ZIP 压缩... | 906 KB    |
|  Microsoft_NET_40.exe   | 2015/11/1 20:28 | 应用程序             | 49,268 KB |

# Frequently Asked Questions

## Answer 03

Double click **FixDriverTool**, then click the **lightning icon**.

(OPENJUMPER)

Fix Arduino Driver

使用本软件请先阅读以下须知：

- 1.本程序仅在几台电脑上做了简单测试，目前只能修复部分驱动不能安装的问题，且只支持win7、win8/8.1系统；
- 2.本程序需要管理员权限，并且会改写系统驱动文件夹权限，请确保你下载源安全可靠；
- 3.本程序仅供大家研究学习，本人不对使用本程序造成的后果负责；
- 4.程序完全开源，自行获取，本人不对源码做解释，如果你确实想问问题，本人也提供高额的有偿服务；
- 5.如果本程序帮到了你，希望你以后也能到社区帮助他人；
- 6.点击右下角本人名字，可以看看广告以示对我的支持。

click the button to fix your Arduino drivers



v0.2 by 奈何col



**THANKS**